








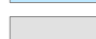
# Gemeinde Wolfhalden AR Strategieplan

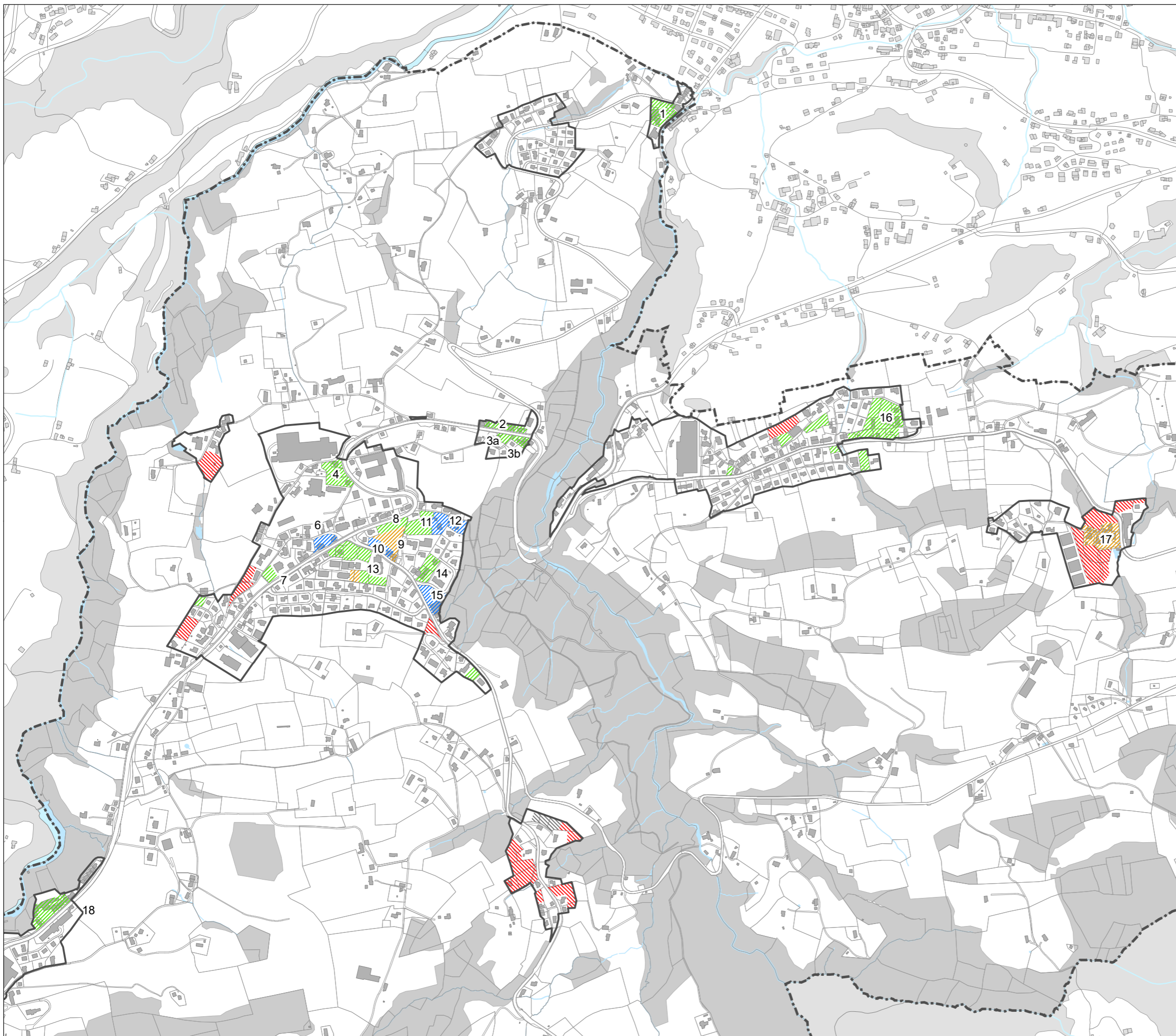
Stand: 23.02.2021

## Strategien

-  Bewahren / Erhalten
-  Neuentwickeln / Umstrukturieren
-  Weiterentwickeln
-  Potentielle Auszonungsflächen
-  in Bau

## Hinweise

-  Bauzone gemäss Zonenplan
-  Gewässer gemäss Zonenplan
-  Wald gemäss Zonenplan



Quellenangaben:

Amtliche Vermessung Geoinfo AG, Februar 2018 (mit Nachführungen)

